



# Serenys dR

## Digital Mammography

The SERENYS dR is a full field digital mammography solution that was designed to provide **excellent image quality, optimal work-flow and outstanding patient comfort.**

### EXCELLENT IMAGE QUALITY

The Serenys DR is equipped with a **direct conversion Amorphous Selenium detector** available in two formats :18x24 cm or 24x30 cm. This technology is recognized as being the most advanced for the best image quality possible.



The **Acquisition Workstation** was developed to improve the examination procedure, and is without a doubt one of the major advantages of the Serenys dR. It provides **a complete set of tools** including: possibility to set the exposure parameters, the ACR view, various graphic tools to manipulate images, DICOM tools, HIS-PACS-RIS Interface. It is in accordance with DICOM 3.0 MG, IHE (PIR, SWF, MI) and CONNECTATHON 2007.



For **improved ergonomics**, an auxiliary display gives information about the exam parameters associated with the “C” Arm such as rotation angle, applied compression force and compressed breast thickness.

A **geometric magnification device** adjustable in two factors (x1.5 and x2) for a more precise diagnosis.

### OPTIMAL PATIENT AND USER COMFORT

The Serenys dR was designed to make the exam environment as comfortable as possible for both the patient and the operator.

**The compression system “μPress”** features a smooth and adapted paddle design that compresses the breast progressively once in contact, making compression as comfortable as possible for the patient.

**The AEC device (Automatic Exposure Control)** for an optimized monitoring of the x-ray dose delivered to the patient.



# Serenys dR

*Optimized workflow and exam versatility...*

## OPTIMIZED WORKFLOW

The SERENYS dR is equipped with a fully motorized **isocentric C-Arm** (rotation and vertical movement). The isocentric C-Arm permits all breast projections without moving the patient and without adjusting the height of the C-Arm, **making exams faster and more comfortable for the patient.**

Perhaps the most important advantage of the isocentric C-Arm is that it is upgradable with a stereotactic biopsy device.



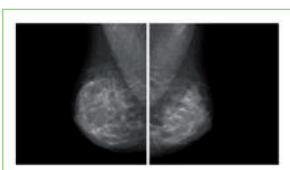
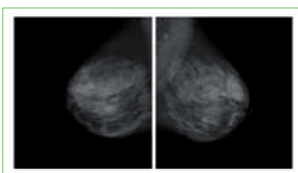
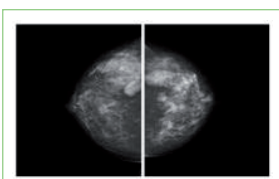
## STEREOTACTIC BIOPSY DEVICE:



The state-of-the-art biopsy device included (optionally) on the SERENYS dR uses **microprocessor control combining simplicity and precision** to locate the three-dimensional position of lesions and position the biopsy needle to reach the lesions, even those in difficult positions.

Key elements of the system include:

- **Automatic Positioning** at LEFT, SCOUT and RIGHT projections with high resolution digital inclinometers
- **The Needle Placement Unit (NPU)**, comprised of:
  - » the needle placement support (different sizes of needles can be fitted)
  - » the compression paddle with window for biopsy
- **The Processing Unit (PU)**, which:
  - » introduces the horizontal coordinates measured with a precision joystick on the two radiographs taken at +/- 15 degrees
  - » calculates and displays the final x, y, z space co-ordinates for automatic positioning of the needle placement support
  - » indicates compression thickness and selection range for needle length



## DIAGNOSTIC WORKSTATION (OPTIONAL)

A post-treatment Workstation is available as an option.

It includes:

- Workstation with DVD recorder
- Treatment and image processing software
- 2 high-resolution 5 MP monitors
- 1 LCD colour monitor
- DICOM 3.0 MG compatibility
- HIS-RIS-PACS interface

